



# MEGA MACS 56

## Product specification

- ✓ A mid-range diagnostic tool equipped with top of the range features
- ✓ 10.4" high resolution display
- ✓ 2 channel oscilloscope and multimeter with graphical display\*
- ✓ Access to Repair Plus, a unique 'real-time repair' concept\*\*

### AN ADVANCED DIAGNOSTIC TOOL THAT OFFERS OUTSTANDING VALUE

Brought to you by HELLA GUTMANN SOLUTIONS, a joint venture between global automotive parts manufacturer HELLA and one of the world's leaders in diagnostic technology Gutmann Messetechnik, the mega macs 56 sits right in the middle of the highly acclaimed mega macs range.

Despite being a mid-range model, the mega macs 56 is packed with features and has the kind of specification you'd usually only expect to see on top of the range models.

### FEATURE-RICH

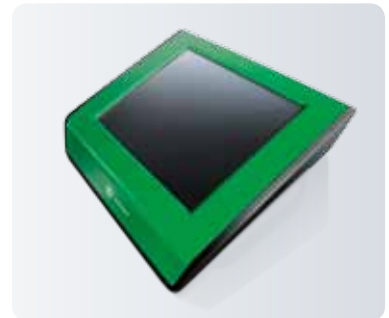
The very latest in diagnostic technology and boasting state-of-the-art features, the mega macs 56 has a powerful 800mhz processor for faster fault-finding, a full colour high resolution 10.4" touchscreen, Wi-Fi and Bluetooth connectivity, and on-board data for more than 38,000 vehicle models. An optional 'Measurements Package', comprising a 2 channel oscilloscope and multimeter, further extends its capability\*.

### FUTURE READY

The mega macs 56 is PassThru® ready, enabling ECU firmware to be downloaded directly to the vehicle from the manufacturers' websites and it is the first mid-range device to offer full access to Repair Plus\*\*. A real-time repair concept, Repair Plus provides instant access to a wealth of vehicle data, repair instructions and step-by-step trouble-shooting guides, and expert technical advice.

### TECHNICAL SUPPORT YOU CAN RELY ON

In keeping with our commitment to technical excellence, every product licence includes access to a FREE technical support hotline offering high-level technical support from a team of experts in the UK, supported by more than 40 Master Technicians in Germany.



mega macs 56

## MEGA MACS 56 PRODUCT FEATURES

- 10.4" full colour high resolution display
- 2 channel oscilloscope\*
- 2 channel graphing multi-meter\*
- Preset component measurement with auto-scaling
- Reading / deleting fault codes of all accessible ECU's
- Fault code explanation with detailed information, including symptoms and possible causes on screen
- Live data with graphical and numerical display, including actual vehicle values for comparison
- Vehicle diagnostic socket location on screen
- Actuator testing
- Component and ECU coding including injectors/BSI units/ABS where available
- Basic settings and adaptations including Xenon lights, steering angle sensors and electronic parking brake
- Service resetting including variable servicing schedules and brake pad/fluid
- DPF regeneration, additive and filter reset (BMW CBS etc.)
- Print function for all results
- 5 hour battery life
- Optional docking station\*
- Bluetooth Air Macs adapter for wireless printing

## ALSO AVAILABLE FROM HELLA GUTMANN SOLUTIONS: CSC TOOL

The CSC TOOL (Camera and Sensor Calibration Tool) from HELLA GUTMANN SOLUTIONS enables accurate calibration of the cameras and sensors used by Advanced Driver Assist Systems, such as Adaptive Cruise Control or Lane Departure Warning, which are increasingly commonplace on many mid-range vehicle models.



## TECHNICAL SUPPORT

For further information or technical support please contact our Technical Helpline on **01295 225443** or visit:

[www.hella-gutmann.co.uk](http://www.hella-gutmann.co.uk)



\* Available at an extra cost

\*\* Available with the HGS Repair Plus service package