

Table Of Contents

Powering On Your GDS	1
Connecting To WiFi	2
Changing Website Domain Settings	2
Registering Your GDS	3
Downloading & Updating Software	4

How To Power On Your GDS

STEP 1: Connect the AC Adapter to your GDS to initially charge. Press the Power Button on the main unit (fig. 1). The system will begin to initialize (fig. 2).



Fig. 1



Fig. 2

After the system completes initializing, the main menu (fig. 3) will appear on the screen, here you can select and access the functions and settings of your GDS.



Fig. 3

There are 3 icons at the top right corner of the main menu screen (fig. 3).

- ① Internet Signal: Indicates current internet signal and its strength.
- ② Power: Indicates Power Capacity/ Charging Status/ Connection to outer power supply.
- ③ Time: Displays current time.

Connecting To WiFi

STEP 1: Select **Settings** on Main Menu Screen (fig 4.). The select **WiFi Settings** and click **OK**. The GDS will now search for available networks.

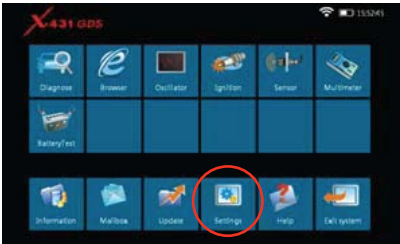


Fig. 4

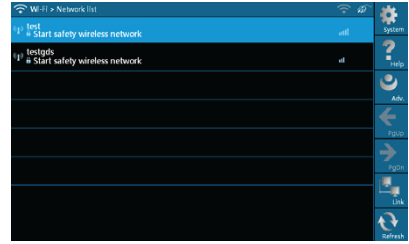


Fig. 5

It may take some time to search and locate available networks. After networks are located, they will be listed on the screen (fig 5.)

STEP 2: Select the network you would like to use and click **Link**, the word “Connected” should appear on the screen (fig. 6), indicating the GDS has connected to the network successfully.

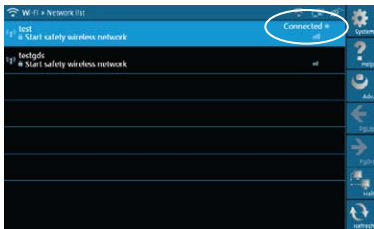


Fig. 6

** If you are still experiencing internet connectivity or update issues, changing website domain settings may be necessary, please see below.*

Note: The GDS can only search and utilize existing WiFi connections. When selecting WiFi to access the internet, please be sure to have your WiFi network connection set-up properly, otherwise any function requiring an internet connection such as: Browser, Registration, U-Disk Update, Network Test, Information, Mailbox, & Software Update may not work.*

Changing Website Domain Settings (If Needed)

STEP 1: The system provides two Domain names for user’s preference. Select **Settings** on Main Menu Screen (fig. 4) then select **X431 Website Domain Settings** and click **OK**, there will be two options (fig. 7) to choose from.

STEP 2: Select second option “**Mainland China**” for best results. Then click **OK** to save new preference.

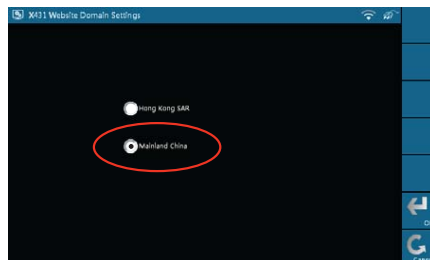


Fig. 7

Registering Your GDS

Before using your GDS you must first register it. On your first attempt to access a GDS function a registration page will appear automatically (fig. 8), once registration is complete, this page will not appear again.

STEP 1: Read the “Terms of Service X431 Website” and click **Agree** to proceed to next step.

STEP 2: Please fill out the requested registration information (fig 9.)

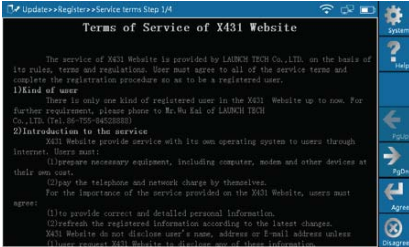


Fig. 8

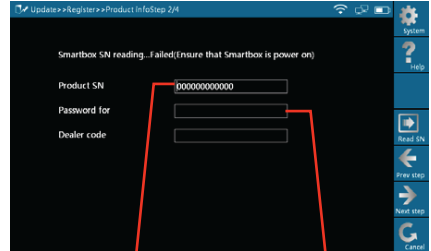


Fig. 9

When purchasing a GDS you are provided a Private & Confidential envelope (fig. 10). The information provided on this envelope is needed to complete registration. Complete filling in required information on registration page (fig. 9). The Dealer Code should be located on your instruction manual or shipping package, you can also retain it from your dealer. Click **Next Step** a new dialogue box will appear. Fill out the required information (items marked with “*” are required to be filled). *Note: Be sure to enter in a valid email address as we will be sending important information to that email address.*



Fig. 10

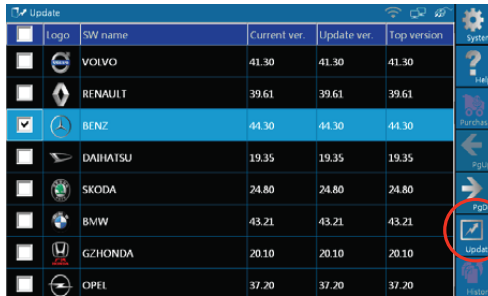
STEP 3: After completing all required registration information fields click **Register**. A prompt message should appear, indicating you have registered successfully.

Once successfully registered, you can proceed to downloading or purchasing software.

Downloading & Updating Software

STEP 1: Click **Update** on Main Menu Screen. Once Update is selected the GDS will then proceed to Check Network configuration, perform ID verification & access the latest version information.

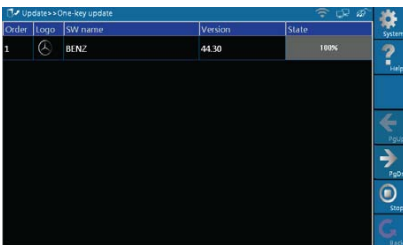
STEP 2: A Software update list will appear on the screen (fig. 11). Select the Vehicle Make (you may choose & update more than one at a time) by clicking on the check box to the left of the vehicle Make.



Logo	SW name	Current ver.	Update ver.	Top version
	VOIVO	41.30	41.30	41.30
	RENAULT	39.61	39.61	39.61
<input checked="" type="checkbox"/>	BENZ	44.30	44.30	44.30
	DAIHATSU	19.35	19.35	19.35
	SKODA	24.80	24.80	24.80
	BMW	43.21	43.21	43.21
	GZHONDA	20.10	20.10	20.10
	OPEL	37.20	37.20	37.20

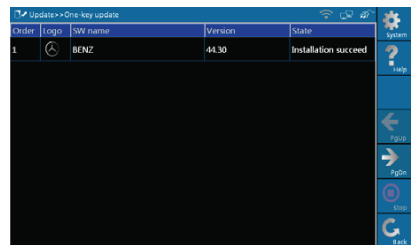
Fig. 11

STEP 3: Here we take “BENZ” as an example to explain the One-Click Software Update. Select “BENZ” (fig. 11) and click **Update** located in the right side menu. The Software will be downloaded and installed automatically. Once Update is selected a window will appear to show progress of installation (fig. 12 & 13).



Order	Logo	SW name	Version	State
1		BENZ	44.30	100%

Fig. 12



Order	Logo	SW name	Version	State
1		BENZ	44.30	Installation succeed

Fig. 13

STEP 4: Once installation has been completed, click **Back** to return to main menu.

Your software has been successfully updated. You can now access the most recent vehicle data included in the version of software selected in Step 2.

For More Detailed Instructions Please See Users Manual

1-877-LAUNCH9 (528-6249)
email: support@launchtechusa.com

www.launchtechusa.com