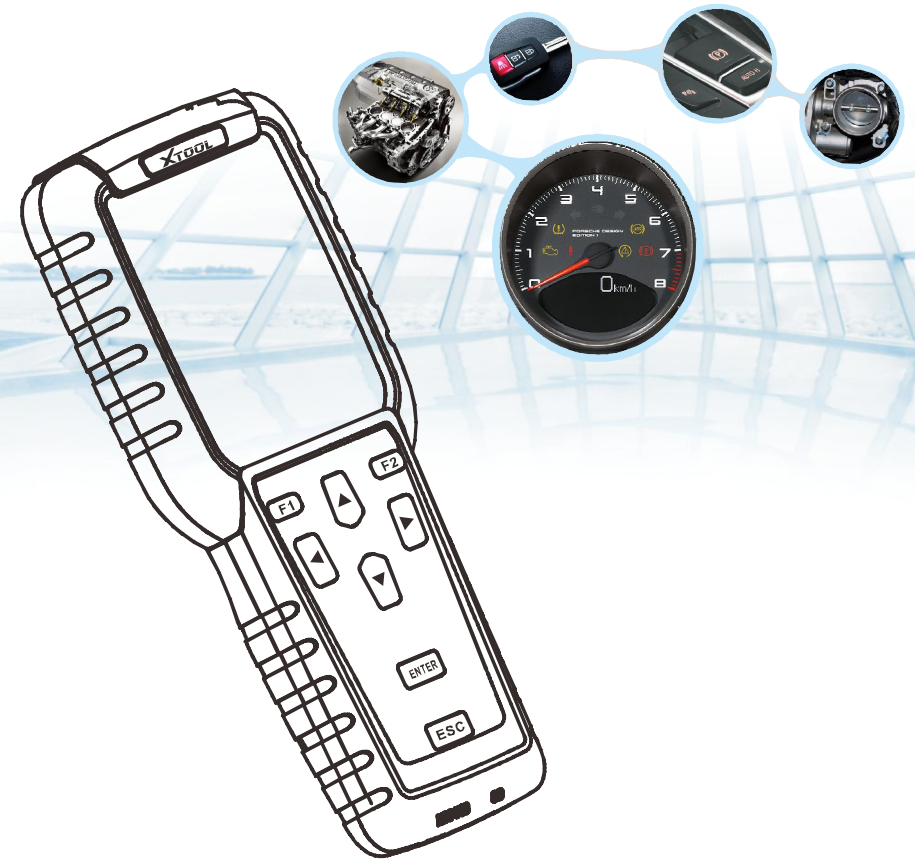


XTOOL

X-Series Service Tool



Xtooltech co.,Ltd

Address: 2nd Floor, Building No.2, Block 1, Excellence City,
No.128, Zhongkang Road, Shangmeilin, Futian
District, Shenzhen, Guangdong, China
Tel.: 0086-755-21670995 Fax: 0086-755-83461644
Website: www.xtooltech.com

User Manual

X-Series Service Tool

Statement

This handbook is the manual of X-Series Service Reset and Key Programming Expert. Without the written permission of the manufacturer, any company or individual shall not copy or backup it in any form (electronic, mechanical, photocopying, recording etc.). This manual is the only operating instruction for X-Series Service Reset and Key Programming Expert. If any result caused by using it on other equipment, the manufacturer does not assume any responsibility for it.

If it is not quality problems of X-Series Service Tool: such as equipment failure caused by user's abuse or misuse, unauthorized disassembly, repair equipment yourself, not operate and maintain by the instructions, lose it, the repair will not be free. Other product names mentioned in this manual are in order to describe how to use X-Series Service Tool, and its owner is still the original company.

X-Series Service Reset and Key Programming Expert and related files are used for normal vehicles maintenance; If they are used for illegal purposes, the manufacturer does not assume any liability.

Content

Chapter1: Summary	1
1.1 Features	1
1.1.1 Advantages	1
1.1.2 Durability	1
1.2 Introduction of the device	2
1.2.1 The main unit and accessories	2
1.3 Hardware Technical Specification	3
1.4 Functions Setting	4
1.4.1 Function Option	4
1.4.1.1 X-100 Pro Function Option	4
1.4.1.2 X-200 S Function Option	5
1.4.1.3 X-300 Plus Function Option	6
1.4.2 System Setting	7
1.4.2.1 Language Option	7
1.4.2.2 Contrast Adjustment	8
1.4.2.3 Font Setting	8
1.4.2.4 Metric / British	9
1.4.2.5 Data Recording	9
1.4.3 System Information	10
1.4.4 Device Self-testing	10
Chapter2: How to upgrade the software of X-Series Service Tool	11
2.1 Install the Upgrade Tool	11
2.2 Software Updating	11

Chapter1: Summary

1.1. Features

1.1.1. Advantages

- Providing multi-language environment so it can be used in different countries and regions.
- The main unit system uses ARM high-speed chip to keep it running fast, stable, and anti-jamming.
- Support updating with TF-SD card. You can update the software at any time.
- Modern design and high-definition true color screen realizes the integration of automotive industry and electronic information technologies, which makes auto diagnostic and key matching much easier, more practical and more economical.

1.1.2. Durability

- Integrity structure design, drop and shock resistance, and durable.
- Industrial design to ensure the tool work stable in harsh environment such as high temperature, low temperature, etc.

1.2. The introduction of the device

1.2.1. Main unit and accessories(picture as below)



Name	Instruction
Testing cable interface	Connect to the main testing cable for testing
USB interface	For connecting USB cable
TF Card Slot	To save diagnostic program and data
F1	Exit the menu or give up /Keyboard input option key
Left	To left
Enter	OK
ESC	Exit or give up
Screen	Show information
F2	Confirm the selection/Other functions option
Up	Up
Right	To right
Down	Down

1.3. Hardware technical Specification

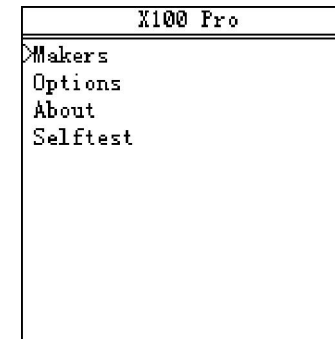
Dimension: 19.2cm(L) *9.3cm(W) *2.9cm(H)
 CPU: ARM7
 Power Supply: DC12V
 Operating Power: DC12V
 Operating Temperature: -10-60℃
 Display Screen: 160×160 TFT

1.4. Functions Setting

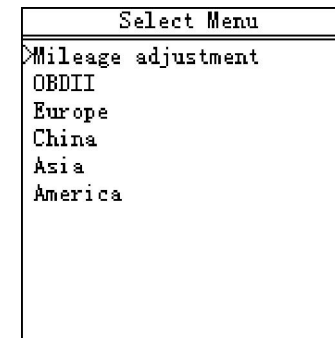
1.4.1 Function Option

1.4.1.1 X-100 Pro Function Option

- 1) Power on and then press ENTER on the screen then go to the function setting, setting information as shown below:

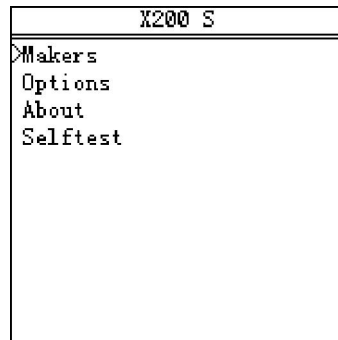


- 2) Make choice according to the car models that you want to do key programming, picture as below:

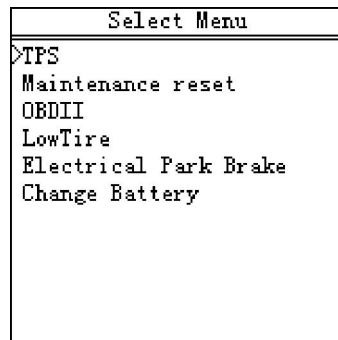


1.4.1.2 X-200 S Function Option

1) Power on and then press ENTER on the screen then go to the function setting, setting information as shown below:

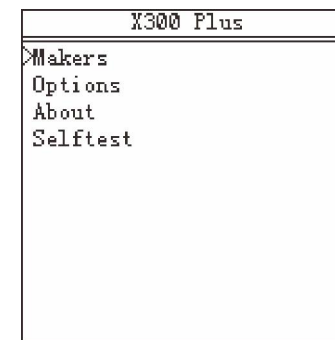


2) Make choice according to the car models that you want to do service reset, picture as below:

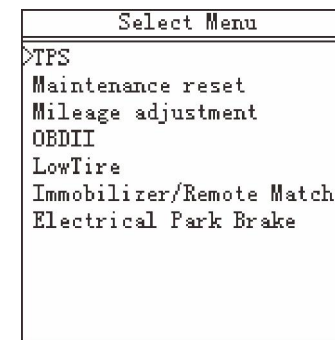


1.4.1.3 X-300 Plus Function Option

1) Power on and then press ENTER on the screen then go to the function setting, setting information as shown below:

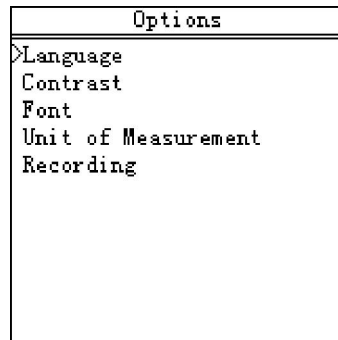


2) Make choice according to the car models that you want to do service reset or key programming, picture as below:



1.4.2 System Setting

Select System Setting, then you can set the language, contrast, display fonts, Metric / English, data record, as shown below:



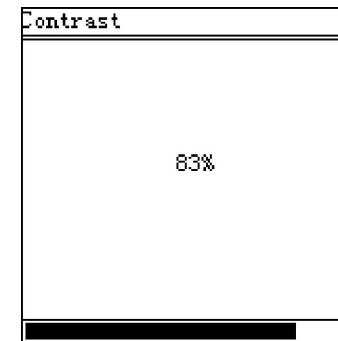
1.4.2.1 Language Option

The instrument supports English and Chinese now. And Russian, Greek, Spanish, Italian version will be released soon. Please choose the language under Language menu through UP and DOWN buttons. Please press ENTER to switch language.



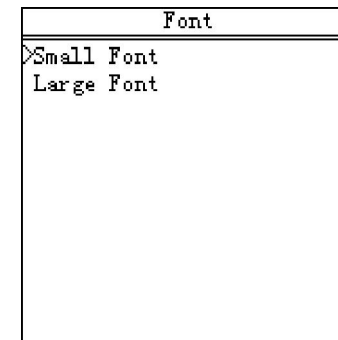
1.4.2.2 Contrast Adjustment

Depending on the environment, adjust the brightness of the screen through the left and right buttons, as shown below:



1.4.2.3 Font Setting

According to personal habits choose the font through UP and Down buttons, and change the font through ENTER, as shown below:



1.4.2.4 Metric / English

According to your needs, select the Metric/British through up and down buttons, and press ENTER to switch, as shown below:

Unit of Measurement
▷Metric
English

1.4.2.5 Data Recording

If you have problems during the testing, please use the Data Recording function to record the testing process and send the data to us. If you want to use Data Record function, select "Enable" through up and down keys and press ENTER to switch it, as shown below:

Remarks: Please select 'Disable', otherwise there will be not enough space in TF card after a long time.

Recording
▷Disable
Enable

1.4.3 System Information

System information includes product serial number, hardware version, software version, release date, registration password, etc.

About
▷S/N:812100019230
HD Version:5.3
SW Version:6.8
Release on 02/19/13
Password:13856348
www.xtooltech.com



1.4.4 Device Self-testing

Device self-testing includes screen display, keyboard testing, hardware self-testing, etc. If the display is missing painting, keyboard doesn't work, or hardware self-testing cannot be passed, please return this X-Series Service Tool to the manufacturer.


Selftest
▷Display Test
Keypad Test

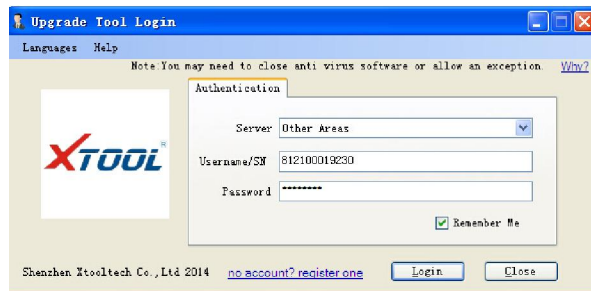
Chapter 2: How to upgrade the software of X-Series Service Tool

2.1. Install the Upgrade Tool

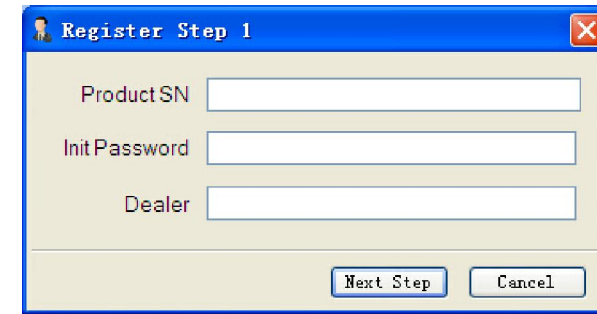
1. Visit XTOOL website <http://www.xtooltech.com>
2. Download the upgrade tool and save the file to your computer.
3. Click  and follow the instructions step by step till you see  on the desktop of your computer.

2.2. Software Updating

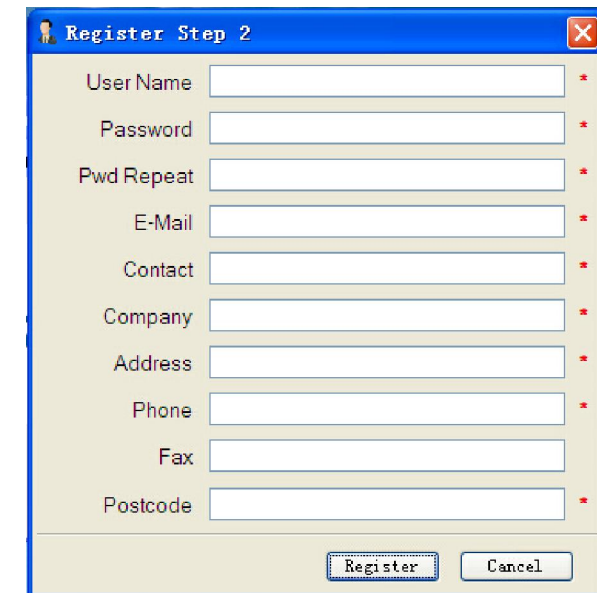
1. Click  to open the Upgrade Tool.



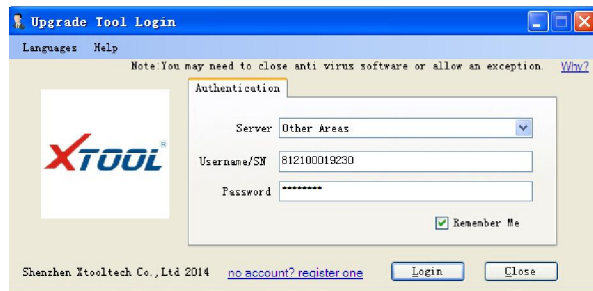
2. Click “no account? Register one” to sign up.



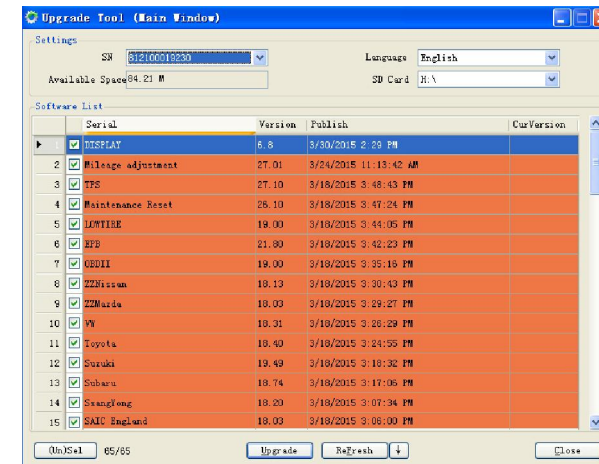
3. Click “Next Step” and fill out the blanks. Please remember the user name and password.



4. Take out the memory card from the scanner and insert it into the card reader and connect to computer. Backup the files in the memory card then format the memory card.
5. Go back to open the update tool again and input the user name and password then click login. You can also input the serial number as user name and the 8 digits number from “About” menu to login.



6. After login, you will see below: Click “(Un)Sel” to select the software and click “Upgrade” then it will update automatically.



7. After finish the updating, please insert the memory card back to the scanner and then you can use the new software.